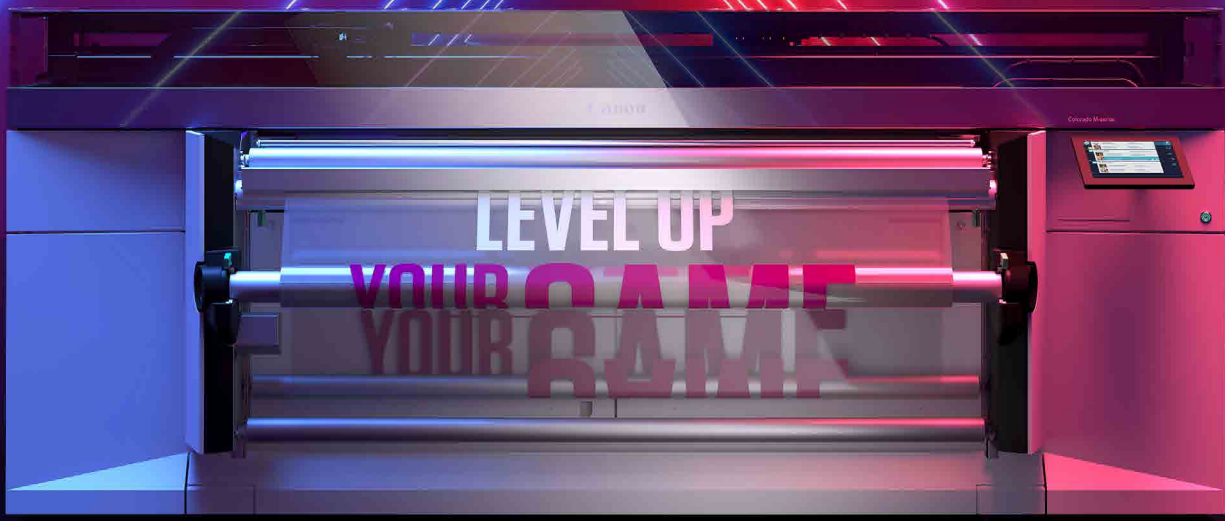


# COLORADO M-SERIES



# READY, SET, GO!

## ARE YOU READY FOR THE NEXT LEVEL?

With the Colorado M-series, 64" roll-to-roll printers powered by patented UVgel technology, you can level up your business and your creativity.

Say "yes" to more jobs, even the very challenging ones, and help meet your high productivity and turnaround standards at the same time. Create unique applications with optional FLXfinish+ with mixed matte and gloss in the same print, without varnish. Jump start your potential with a smart financial investment in the large format graphics business. What's even better: the Colorado M-series is upgradeable in the field, allowing you to level up your machine as you level up your business.

## THE POWER OF UVGEL WITH OPTIONAL WHITE INK!

The proven UVgel ink technology is unique in the large format print market, and the Colorado printers were developed to allow you to get the most out of its features. The Colorado M-series includes the ability to add optional UVgel white ink. And not just any white....

## WHITE INK WITHOUT WORRY

- High opacity
- Same ease of maintenance as any other color
- High-speed white production

## THE COLORADO M-SERIES OVERVIEW

A modular and in-field upgradeable platform.



COLORADO  
M3 BASE



COLORADO  
M3W



COLORADO  
M3 PRO



COLORADO  
M3W PRO



COLORADO  
M5 PRO



COLORADO  
M5W PRO

**LEVEL UP  
YOUR CREATIVITY**

Wide, unique application range

**LEVEL UP  
YOUR PRINTER**

Modular design, field-upgradeable



**LEVEL UP  
YOUR PRODUCTIVITY**

Productive by nature

**LEVEL UP  
YOUR BUSINESS**

A smart financial investment

# LEVEL UP YOUR CREATIVITY

Wide and unique application range

The original Canon Colorado series was designed for a wide application range. Today's Colorado M-series takes media, ink, and print mode possibilities to the next level to inspire your creative ambitions and impress your customers with reliable quality, help with your turnaround times, and make unique applications achievable.

## WHITE INK WITHOUT WORRY

Have you heard that printing with white ink is a hassle? With the Colorado M-series and UVgel technology, you can lay these worries to rest. Our highly productive UVgel white ink works as any other color.



## FLXfinish+

Optional FLXfinish+ is the unique ability to print matte, gloss, or mixed matte and gloss in one go without a varnish, shaking up the world of large-format graphics.

## FLXture

The five-layer PRISMAguide XL FLXture print recipe combined with the optional UVgel white ink helps make it possible to incorporate wood and leather reliefs, embossments, and other textures into printed graphics.

## QUALITY

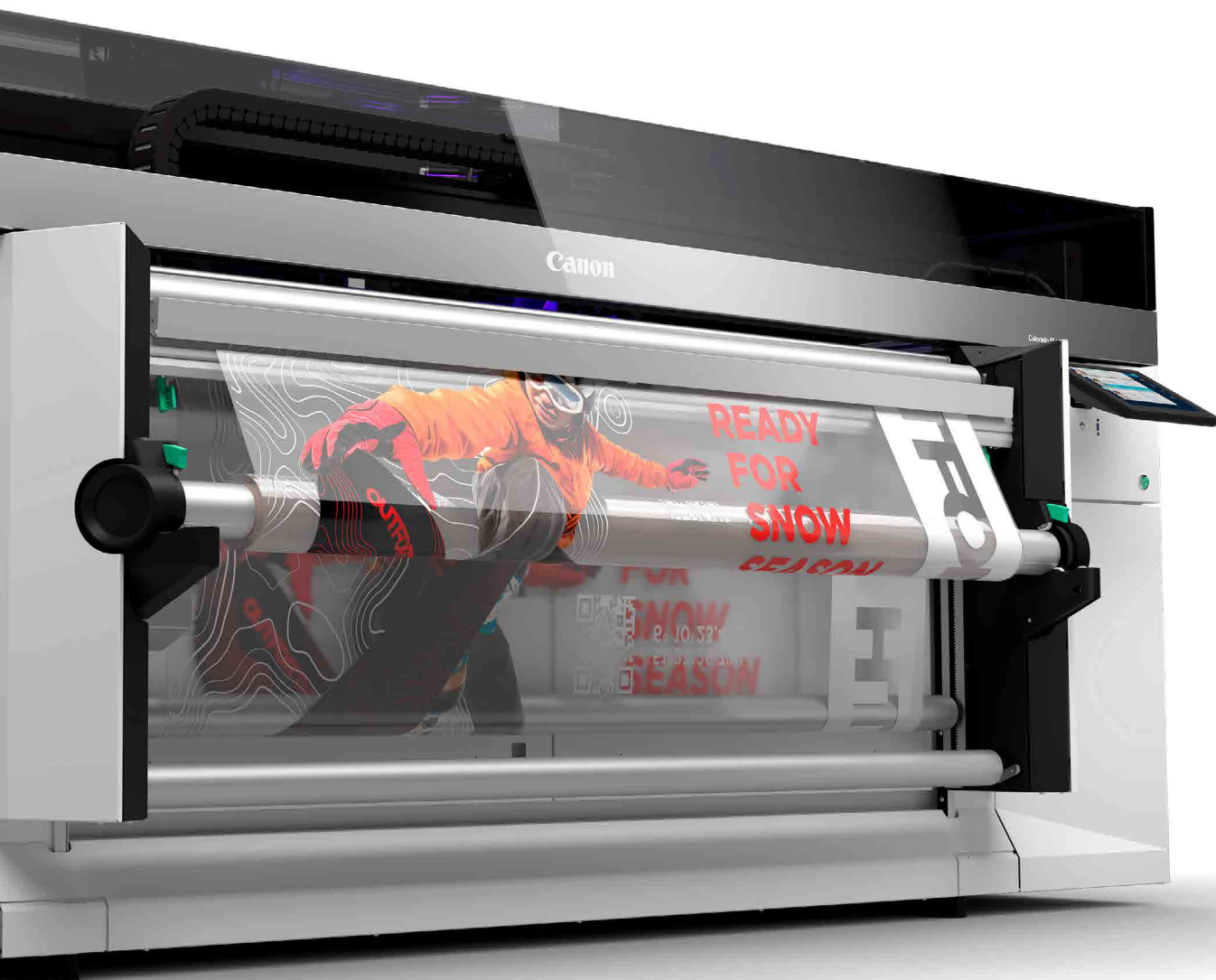
The Colorado M-series features important industry-standard certifications that highlight the quality of the print output like 3M™ MCS™ Warranty or GREENGUARD Gold certification.

## WIDE APPLICATION RANGE

The Colorado M-series gives your customers amazing design freedom, with impressive media options:

- Textured
- Transparent
- Colored
- Reflective
- Magnetic Requires Optional Magnetic Kit

This expands on the wide media range the Colorado printers are known for, including self-adhesive vinyl, paper, banner media, film, canvas, and textiles, plus heat-sensitive media and cost-effective uncoated media. Unidirectional print modes are available to reach high-quality print on challenging media types.







# UVGEL & FLXFINISH+

## THE UVGEL QUALITY ADVANTAGE

The special gel consistency of the UVgel inks make them ideal for fast, high-quality printing. The resulting prints have a wide color gamut, crisp image quality, and are instantly dry without smudging or sticking.

- Instant pinning and dot gain control
- Low temperature curing—suitable for thin and heat-sensitive media
- Scratch resistance
- Easy lamination, smooth ink fill
- Consistent color print to print and job to job
- Odorless and instant dry inks

## FLXfinish+ OPTION

Made possible by the gelling characteristics of UVgel ink, the optional FLXfinish+ allows you to add a velvety matte finish to interior décor products, a brilliant gloss finish for display prints, or unique combinations of the two to create attention-grabbing visuals, with excellent registration and without the need for an extra printhead or ink channel.





# WHITE INK WITHOUT WORRY

The Colorado M-series offers the UVgel advantage also in white. Our highly productive optional UVgel white ink works as any other color, with no extra maintenance.

The printed white ink is designed to keep its color over time. It has the flexibility that you expect for your applications, including multilayer application of up to five layers—to be cut, stretched, and finished, directly after printing. And the automated maintenance features of the Colorado M-series are designed to help keep the ink and nozzles ready to print.

## PRINT EFFICIENTLY WITH WHITE INK

The Colorado M-series UVgel technology is known for its efficient use of ink, and this efficient ink use is also true for UVgel white ink. There is no separate action, set-up, or maintenance needed to print an application that includes white ink. With productive print modes that are realistic for a high-quality operation, applications with white ink are a great way to increase your printing capabilities.

Use the optional PRISMAguide XL software for easy, spectacular, multilayer white ink applications.

- **Spot color:** printing color and white at the same time on either colored or transparent media.
- **Underflood printing:** printing a white layer underneath a color image to help provide a better contrast on colored or transparent media.
- **Overflood printing:** printing a white layer on top of a color image on transparent media to provide color vibrancy for window graphics.
- **3-layer printing:** printing a white layer in between two layers of color, which is ideal for high-end and day/night backlit signage applications.
- **5-layer printing:** printing consecutive layers of color, white, black, white, and color for extra opacity, enabling a different image on either side of transparent media to create double-sided window graphics.

# LEVEL UP YOUR **PRINTER**

Modular design, field-upgradeable





A Colorado M-series printer is an investment in taking your business to the next level—today and in the future. Its power and versatility can become the heart of your business, and it can grow with you as you expand.

## ROCK-SOLID QUALITY

The Colorado family is built to last, designed for high uptime and consistent print output over time. Low-maintenance by design, the Colorado M-series is designed to minimize downtime due to maintenance.

## ROBUST AND RELIABLE

Canon's own next-level UVgel 425 printhead has doubled the amount of nozzles for outstanding speed and reliability, using fewer printheads. Colorado M-series features an improved automatic maintenance concept over previous Colorado printer models: a tissue cassette which automatically cleans the nozzles, based on real-time nozzle status information, provided by our patented Piezo Acoustic Integrated Nozzle Technology (PAINT).

## SMART MEDIA HANDLING

The Colorado M-series also boasts next-level media detection sensors in its media path to support the use of a wide range of media. For instance, it can use white markers that allow printing on colored media, and developed robust markers for accurate registration on heavily textured media.

## ONE MACHINE, MANY CONFIGURATIONS

You can configure your Colorado M-series machine to your current business needs. There are many different types of optional upgrades available for the Colorado M-series, most without needing a service visit (excludes white ink and magnetic kit upgrades).

- In-field speed upgrade, taking your M3 model to an M5 model.
- Temporary 30-day speed licenses are also available for the M3 models to run at M5 speeds during your peak production times. Only works with 700 ml ink bottles.

- Did you choose a model without white ink? Add it as an upgrade—with just a service visit.
- Larger 1l ink bottles, and smaller 700 ml ones—or you can use them both (for the M5 Pro and M5W Pro) for easier stock management.
- FLXfinish+: make prints with a glossy or matte finish, or mix both matte and gloss effects within one single print.
- Double-sided printing.
- Print-side-in printing.
- Magnetic Media Kit.
- Dual roll capabilities.

## MINIMAL OPERATOR INTERVENTION

One of the hallmarks of a machine built to industrial standards is its ease of use. The Colorado M-series has many features that helps to reduce labor costs and increase your operators' job satisfaction by freeing them to do more high-value tasks.

- Fast, easy media loading with the option to have two online rolls.
- Ink refills during printing.
- The optional PRISMAguide XL software to simplify preparation of complex print applications is designed to help provide first-time-right printing, and save application recipes for later re-use.
- Automated printhead maintenance and nozzle compensation.

In other words, the Colorado M-series can almost watch over itself. With the PRISMA remote app, operators can monitor the printer status on their compatible smartphone, smartwatch, or tablet at any time, even when running overnight jobs.

# LEVEL UP YOUR BUSINESS

## A smart financial investment

The features of the Colorado M-series printers speak for themselves. But with all of this, is it still affordable? We can answer that with a wholehearted “yes”. The Colorado M-series was designed with low total cost of ownership in mind, making it a smart financial investment.

### LOW OPERATIONAL COSTS

The Colorado M-series helps you to get the most out of each day, with reliable, consistently high productivity and uptime. The UVgel technology provides stunning results with low ink and energy usage. And when used with the optional PRISMAguide XL software, you can enjoy first-time-right printing.

### HIGH-VALUE APPLICATIONS

Customers are happy to pay more for creative, high-value applications, especially if they come with a fast turnaround time. The Colorado M-series comes with a wide media range, which is excellent for creativity but also supports cost-conscious media options. Canon’s excellent sensors and software are designed to provide very little waste. Finally, the machine doesn’t take an operator’s full attention to run, leaving them free for other valuable tasks.

### FUTURE-PROOF MODULAR BUILD

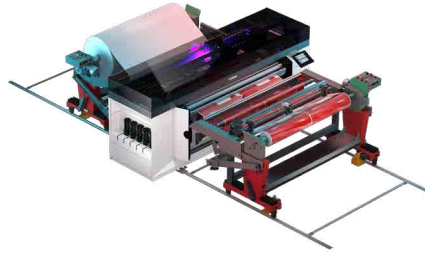
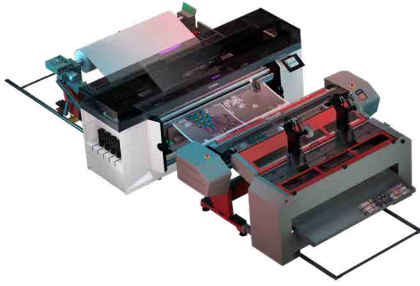
A key argument for the Colorado M-series is its upgradeability. By investing only in the productivity level you need at the time, you can help optimize your investment. And with available upgrades, you are not boxed into your current business level. You can increase your speed, options, and productivity as the need arises.

All in all, this can result in a high return on investment.

When investing in a printer, a make-or-break criterion is: can it get the work done? The Colorado M-series can do that, and more: it can help you take your productivity to the next level—smoothly, without fuss, and in spectacular quality. And all that at a low total cost of ownership.

## SHORTER TURNAROUND TIMES

These days, for most large-format print jobs, customers want a 24-hour turnaround or less. The Colorado M-series and the next-level UVgel technology are designed to help you to say “yes” to wide-format jobs with ease, even highly challenging ones.



### UVGEL WALLPAPER FACTORY OPTION

The UVgel Wallpaper Factory offers a complete digital printing and cutting solution, helping to enable mass customization and boundless creativity for unique wallcovering products. With integrated cutting and coreless rewinding, coupled with a robust bulk feed system, it allows for unattended operation overnight.

### UVGEL PRINT FACTORY OPTION

Help maximize efficiency and decrease media load frequency with cost-effective jumbo rolls for printing. The UVgel Print Factory handles 30” diameter rolls up to 880 lbs. in weight, and helps to enable continuous, operator-free production. Attain, large-volume output without compromising image quality or durability.

### UVGEL PACKAGING FACTORY OPTION

The UVgel Packaging Factory helps to create high quality preprinted sheets for lamination onto fiberboard and corrugated packaging. The cut-and-stack solution with a jumbo roll loader produces output sheets compatible with litho lamination, creasing, folding, and gluing workflows.

EXTERNAL MODULES	UVGEL WALLPAPER FACTORY	UVGEL PRINT FACTORY	UVGEL PACKAGING FACTORY
Jumbo Roll Loader	●	●	●
Jumbo Roll Interface Kit	●	●	●
X/Y Cutter	●	-	●
Rewinder	○	-	-
Jumbo Roll Rewinder	-	-	-
Stacker	-	●	●

● Standard ○ Optional - Not available

# WIDE APPLICATION RANGE



## DECALS

*Eye-catching special metallic or holographic stickers to decorate and personalize objects.*

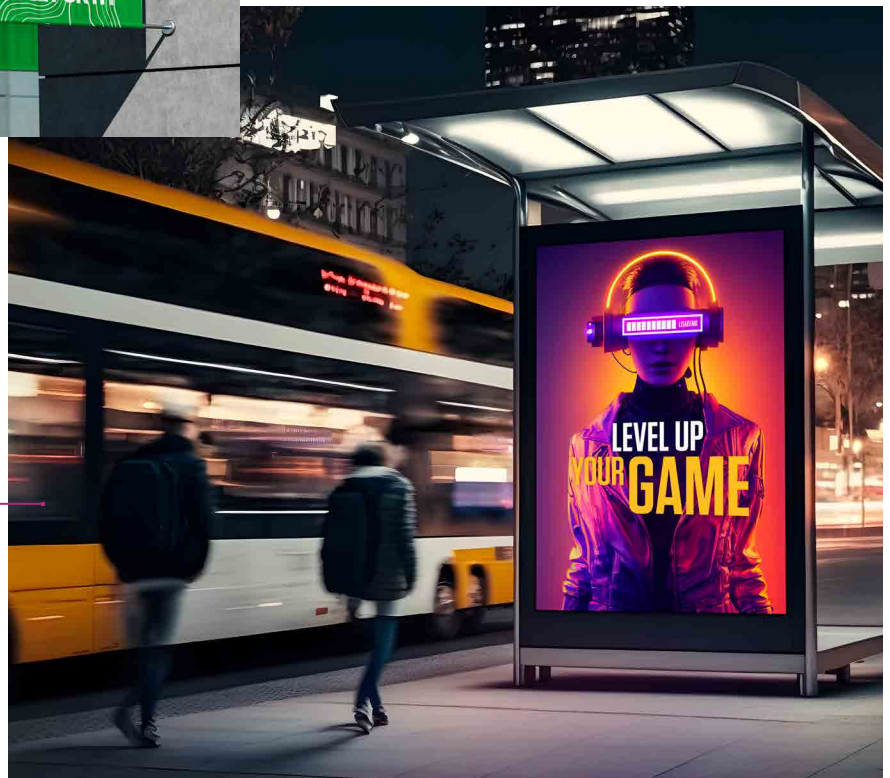


## OUTDOOR ADVERTISING

*Exceptionally low running costs for price-sensitive outdoor banners and blueback applications.*

## BACKLIT DISPLAYS

*Powerful, high-density images thanks to UVgel. Now even richer in color through multilayer printing.*







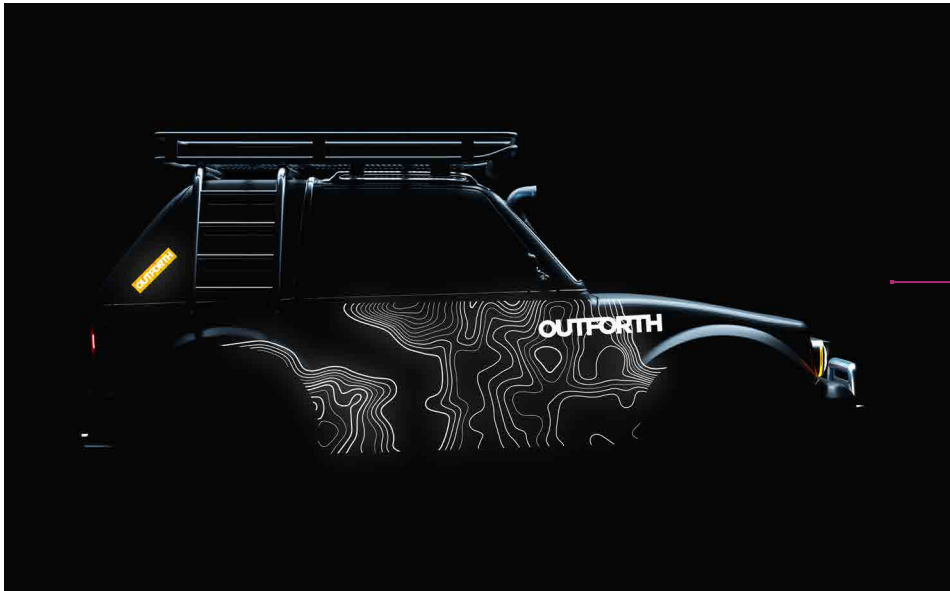
## FLOOR GRAPHICS

*Robust to walk and work on, with brilliant colors that create an eye-catching image.*



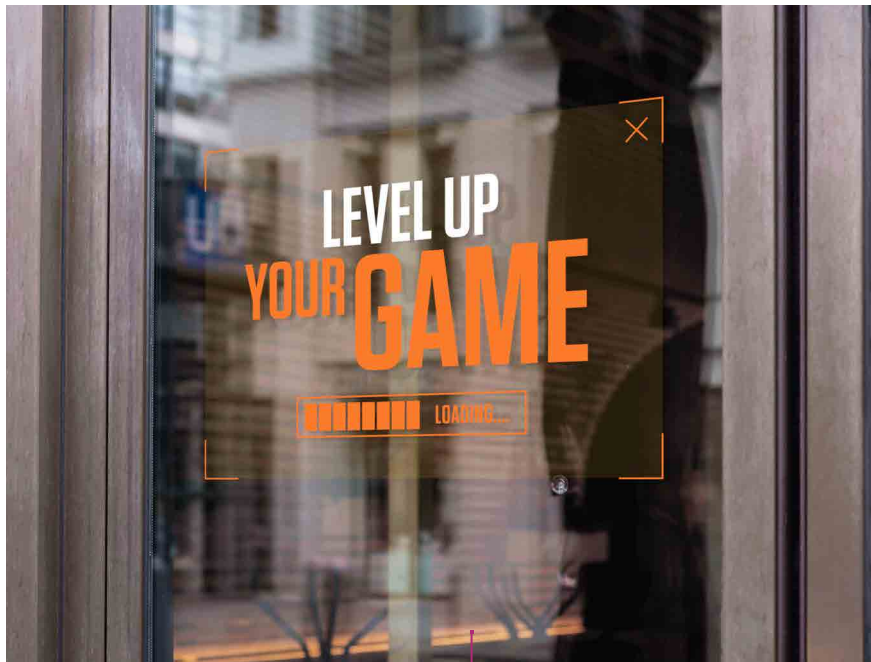
## LABELS

*A two-in-one deal: labels provide product information but also attract attention on the store shelves.*



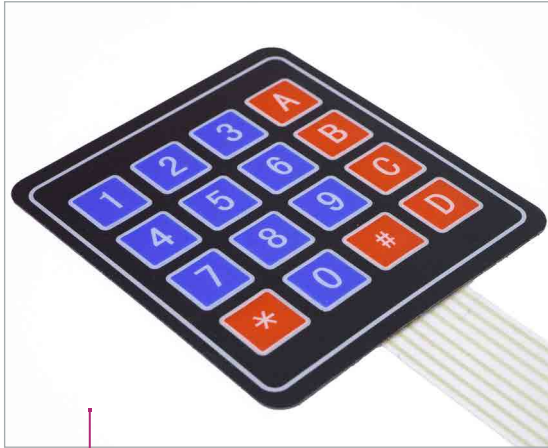
## FLEET GRAPHICS

*The combination of matte and glossy prints increases your design options. 3M™ MCS™-certified, inks, for stretchable, robust, and washable prints.*



## WINDOW GRAPHICS

*Strong colors on clear media that is often applied wet to reduce bubbles.*



## MEMBRANE SWITCHES

High-quality images thanks to UVgel's excellent dot control.

## HEAT TRANSFER

Transfer film and UVgel print, with excellent washability. Want to use a standard heat press? No problem! Enjoy limitless creativity.



## WALLPAPER

Robust, scratch-resistant wallpaper with excellent dimensional stability and color consistency thanks to UVgel. Digital wallpaper done right!



## MAGNETICS

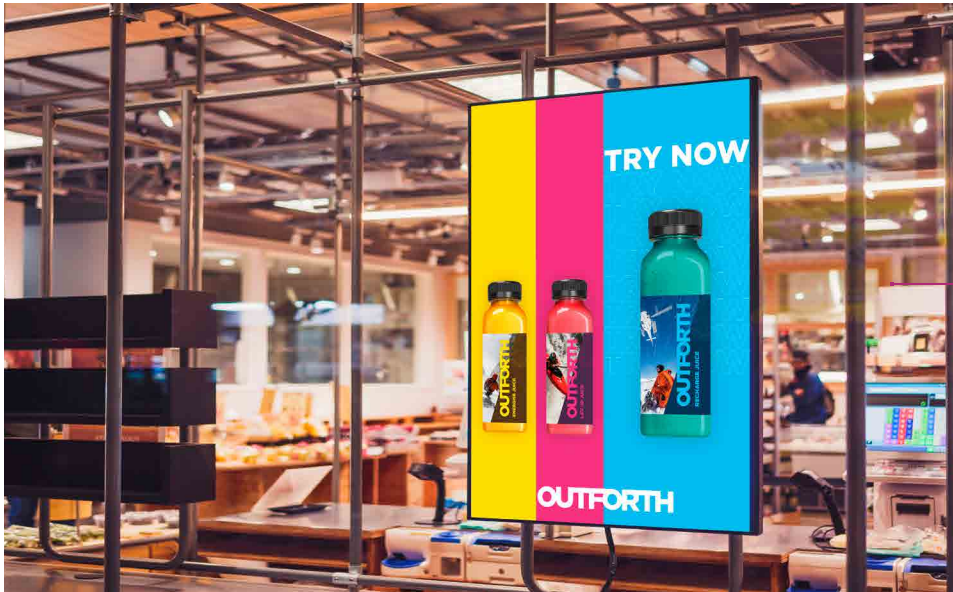
Extremely easy to install. Works great with UVgel—in white, pre-colored, or PVC-free.

## PACKAGING

Digital printing with UVgel enables short runs and bespoke designs to increase the joy of unboxing. Litho-laminated or direct onto paperboard.







**FRAMED SOFT  
SIGNAGE RETAIL  
POSTER**

*GREENGUARD Gold certification.*

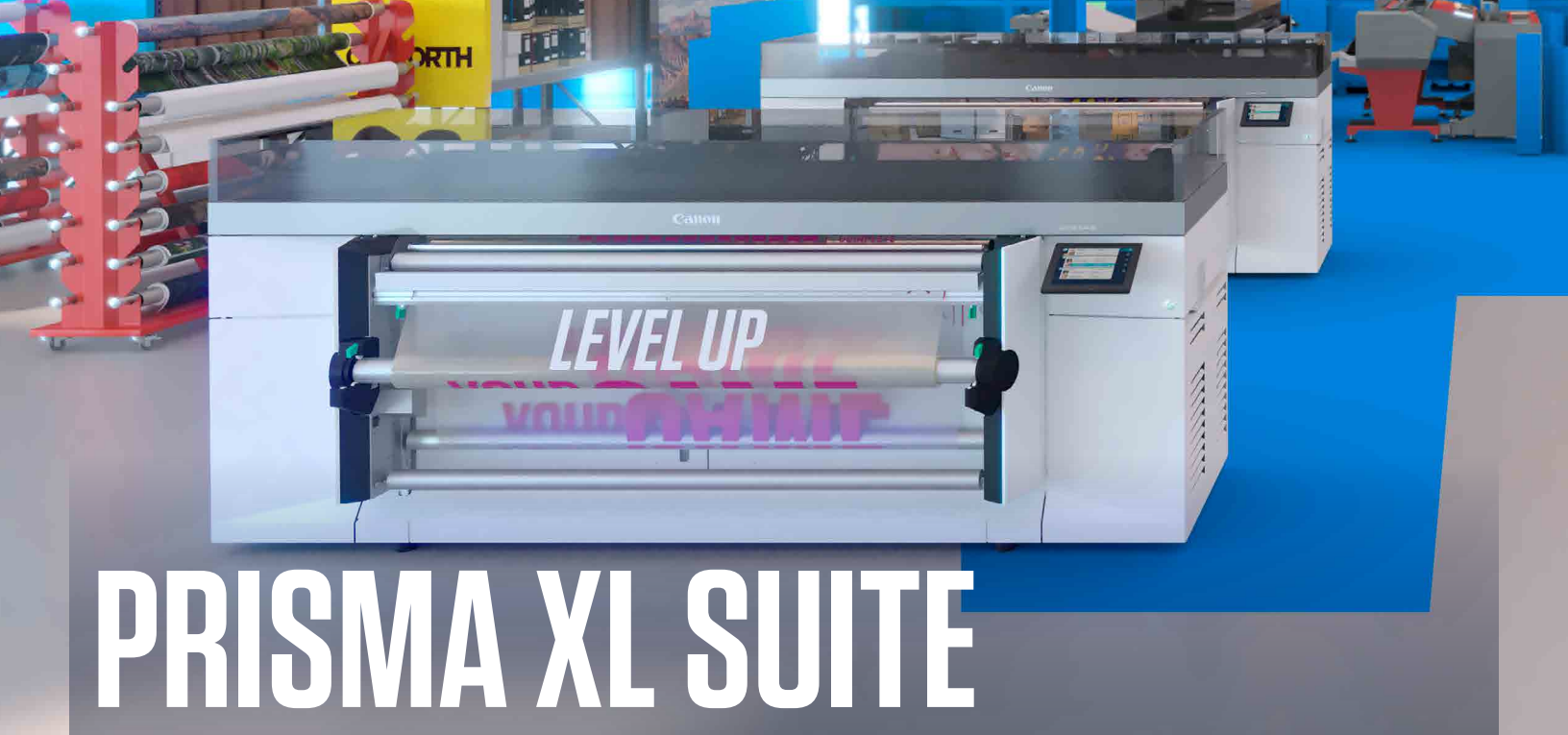
**PHOTO/ FINE ART**

*Exceptional artistic  
freedom with flexible,  
robust UVgel inks for manual  
or automatic frame mounting.*



**WRAPPING PAPER**

*Create personalized gifts for that  
perfect moment they will never  
forget. Of course, printed on  
uncoated and recyclable media.*

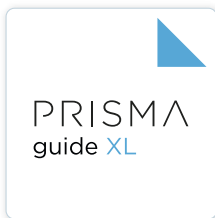


# PRISMA XL SUITE

## CREATE IMPACT BEYOND IMAGINATION

Optional PRISMA XL Suite is your set of workflow software solutions for large format graphics.

- Deliver outstanding and inspiring print applications every day.
- Help to increase your creativity and streamline your production.
- Deliver print applications that stand out.



### PRISMAguide XL

Is a powerful and easy-to-use design and workflow management application for print service providers and industrial printing companies.



### PRISMAservice

The ultimate platform for service activities.

- Helps to provide you with fast, efficient, and effective customer support.
- Integrates a wide range of Canon service tools in one unified portal.
- For servicing partners and servicing customers.



### PRISMA remote app

Tightly integrates into your production print operation.

- 24/7 insights into performance of your Colorado printer.
- Not only shows what's going on, tells what action is needed to keep your printer running.
- Compatible mobile device apps available.





## PRINTSIGHT FOR COLORADO

The PrintSight software enables print-for-pay business owners or their production staff to closely monitor many important aspects of their Colorado M-series printers from anywhere on their network. PrintSight displays a range of data in an intuitive user interface, allowing for real-time reports of ink/toner usage, media type printed, square footage, print time, machine status, and more.

PrintSight takes the guesswork out of knowing key details about a particular job or determining which machines are under or over utilized. With the ability to enter your ink cost per liter/bottle and media cost, PrintSight can calculate the cost of the job.

- ➔ MONITOR MACHINE STATUS
- ➔ SEE TYPES OF MEDIA PRINTED AND SQUARE FOOTAGE USED
- ➔ VIEW JOB PRINT TIMES
- ➔ CALCULATE THE COST OF THE JOB

# COLORADO M-SERIES

PRINTING	COLORADO M3 BASE	COLORADO M3W	COLORADO M3 PRO	COLORADO M3W PRO	COLORADO M5 PRO	COLORADO M5W PRO
<b>Printing Method</b>	UVgel piezoelectric inkjet					
<b>White</b>	○	●	○	●	○	●
<b>Printing Modes: Gloss</b>			●			●
High Key			1,195 ft <sup>2</sup> /hr			1,709 ft <sup>2</sup> /hr
Express			840 ft <sup>2</sup> /hr			1,229 ft <sup>2</sup> /hr
Speed			592 ft <sup>2</sup> /hr			861 ft <sup>2</sup> /hr
Production			420 ft <sup>2</sup> /hr			610 ft <sup>2</sup> /hr
High Quality			312 ft <sup>2</sup> /hr			427 ft <sup>2</sup> /hr
Premium			237 ft <sup>2</sup> /hr			290 ft <sup>2</sup> /hr
Specialty			215 ft <sup>2</sup> /hr			222 ft <sup>2</sup> /hr
<b>Printing Modes: Matte</b>	○	○	●	●	●	●
Express			388 ft <sup>2</sup> /hr			495 ft <sup>2</sup> /hr
Speed			291 ft <sup>2</sup> /hr			409 ft <sup>2</sup> /hr
Production			237 ft <sup>2</sup> /hr			333 ft <sup>2</sup> /hr
High Quality			194 ft <sup>2</sup> /hr			290 ft <sup>2</sup> /hr
Specialty			140 ft <sup>2</sup> /hr			215 ft <sup>2</sup> /hr
Backlit			194 ft <sup>2</sup> /hr			215 ft <sup>2</sup> /hr
Backlit Density			108 ft <sup>2</sup> /hr			108 ft <sup>2</sup> /hr
<b>Printing Mode: Mixed Matte/Gloss (FLXfinish+)</b>	○	○	●	●	●	●
FLXfinish+			75 ft <sup>2</sup> /hr			75 ft <sup>2</sup> /hr
<b>Printing Modes: Spot White 1 Layer</b>	○	●	○	●	○	●
Express			291 ft <sup>2</sup> /hr			388 ft <sup>2</sup> /hr
Speed			237 ft <sup>2</sup> /hr			323 ft <sup>2</sup> /hr
Production			194 ft <sup>2</sup> /hr			258 ft <sup>2</sup> /hr
High Quality			140 ft <sup>2</sup> /hr			194 ft <sup>2</sup> /hr
Specialty			129 ft <sup>2</sup> /hr			129 ft <sup>2</sup> /hr
<b>Printing Modes: White Underflood/Overflood 2 Layers</b>	○	●	○	●	○	●
Speed			215 ft <sup>2</sup> /hr			215 ft <sup>2</sup> /hr
Production			151 ft <sup>2</sup> /hr			151 ft <sup>2</sup> /hr
High Quality			108 ft <sup>2</sup> /hr			108 ft <sup>2</sup> /hr
Specialty			75 ft <sup>2</sup> /hr			75 ft <sup>2</sup> /hr
<b>Printing Modes: White 3 Layers</b>	○	●	○	●	○	●
High Quality			75 ft <sup>2</sup> /hr			75 ft <sup>2</sup> /hr
Specialty			54 ft <sup>2</sup> /hr			54 ft <sup>2</sup> /hr
<b>Printing Modes: White 5 Layers</b>	○	●	○	●	○	●
High Quality			43 ft <sup>2</sup> /hr			43 ft <sup>2</sup> /hr
Specialty			32 ft <sup>2</sup> /hr			32 ft <sup>2</sup> /hr
Robust Unidirectional			16 ft <sup>2</sup> /hr			16 ft <sup>2</sup> /hr
<b>Temporary Speed Upgrade License (30 Day)</b>	○	○	○	○		-
<b>Print Resolution</b>	Up to 1,800 dpi					
<b>Ink Types</b>	Canon UVgel 460 ink					
<b>Ink Color</b>	CMYK	CMYKW	CMYK	CMYKW	CMYK	CMYKW
<b>Ink Packaging</b>						
1 x 700 ml Ink Bottle			●			●
2 x 1 Liter Ink Bottle			-			●
Ink Reservoir Per Ink Color			1.8 liter			2.1 liter
Refill While Printing					●	
<b>Printhead</b>						
UVgel 425	4	5	4	5	4	5
High Frequency Drop-on-demand Piezo-electric Printhead					●	
PAINT (Piezo Acoustic Integrated Nozzle Technology)					●	
<b>Automatic Maintenance</b>					●	
<b>Curing</b>	UV LED					

● Standard ○ Optional - Not available

# Technical specifications

MEDIA	COLORADO M3 BASE	COLORADO M3W	COLORADO M3 PRO	COLORADO M3W PRO	COLORADO M5 PRO	COLORADO M5W PRO
Roll Width	Up to 64" (1,625 mm)					
Print Margin	0.21" (5.3 mm) <sup>1</sup>					
Roll Weight	Up to 110 lbs. (50 kg)					
Roll Diameter	Up to 8.7" (220 mm)					
Media Thickness	Up to 0.03" (0.8 mm)					
<b>Media Input</b>						
Print Side Out	○	○	●	●	●	●
Print Side In/Double-sided Printing	○	○	●	●	●	●
1 Roll	●	●	●	●	●	●
2 Rolls (automatic roll-feeding and -switching depending on media)	○	○	●	●	●	●
Magnetic Media Kit <sup>2</sup>	○	○	○	○	○	○
Jumbo Roll Interface	-	-	-	-	○	○
<b>CERTIFICATIONS</b>						
General	UL GREENGUARD Gold, ASTM F793/F7693M-15 (Category V, Type II)					
Media Certifications	3M MCS™, Avery ICS™ and Orafol OCS™					
<b>WARRANTY</b>						
Parts Warranty	2-year Warranty with unlimited square footage Usage					
Printhead Warranty	2-year Warranty or 215K square feet usage (whichever comes first)					
<b>INTERFACE</b>						
	Ethernet (100/1,000 Mbit/s)					
<b>DIMENSIONS</b>						
Printer W x D x H	3,020 x 1,095 x 1,300 mm					
<b>WEIGHT</b>						
	750 kg					
<b>WORKING ENVIRONMENT</b>						
Operation Printer	18–30 °C (recommended 20–27 °C), 20 - 80% RH (no condensation)					
<b>POWER</b>						
Consumption	0 W - Off, 250 W - Standby, 1.6 kW - Ready, 2.3 kW - Printing 2 inputs, each 200-240V +/- 10%, 50/60 Hz, 16/6 A.					
Source	Printer is declared under Radio Equipment Directive (RED)- 2014/53/EU					
<b>REGULATORY CERTIFICATION</b>						
Declaration of Conformity	Compliant with EN62479, EN301 489-1, EN301 489-3, EN300-330 FCC Part 15 and RSS-210 certified (module)					
Radio	IEC/EN/UL/CSA 62368-1 compliant Applicable marks: CE, TÜV-GS, C-UL-US, RCM					
Safety	Emission: Class A compliant according CISPR 32, FCC part 15, and ICES-003 Immunity: CISPR 35 compliant					
EMC Environmental	WEEE, RoHS directive 2011/65/EU, REACH, CE Applicable marks: CE, FCC, IC, VCCI, RCM, CETECOM					
<b>SOFTWARE</b>						
RIP Compatibility <sup>3</sup>	ONYX Graphics, Caldera, EFI, PrintFactory, ColorGATE, ErgoSoft, Shiraz					
PRISMAguide XL	○					
PRISMA Remote App	●					
PRISMAservice	●					

Specifications subject to change without notice.

<sup>1</sup> Margin 0.43 mm when Media Step Control enabled.

<sup>2</sup> Magnetic media can only be used in Roll Position 1. The magnetic kit may impact feeding of other media in Roll Position 1 with no impact to Roll Position 2. Compliant magnetic media needs to be less than 500 microns thick, and the media width times the squared media thickness (W x T<sup>2</sup>) in mm needs to be less than 250. Non-compliant magnetic media needs to be tested and approved by the Canon Customer Experience Center before use. Any non-compliant media still needs to be within standard Colorado media specifications to be tested.

<sup>3</sup> Contact RIP manufacturer for required version.

● Standard ○ Optional - Not available



**Canon**



Canon is a registered trademark of Canon Inc. in the United States and elsewhere. Colorado, FLXfinish+, FLXture, PRISMA, and UVgel are registered trademarks or trademarks of Canon Production Printing Netherlands B.V. Android is a trademark of Google LLC. iOS is a registered trademark or trademark of Cisco Corporation in the United States and elsewhere, and is used by Apple Inc. under license. All other referenced product names and marks are trademarks of their respective owners and are hereby acknowledged. Availability, prices, and specifications are subject to change without notice. Products shown with optional accessories. Neither Canon Inc., nor Canon U.S.A. Inc., represents or warrants any third-party product or feature referenced hereunder. UVgel 460's GREENGUARD Gold Certification resulted from its testing against the UL 2818 – 2013 Gold Standard for Chemical Emissions for Building Materials, Finishes and Furnishings. Canon U.S.A. Inc. does not provide legal counsel or regulatory compliance consultancy, including without limitation, Sarbanes-Oxley, HIPAA, GLBA, Check 21, or the USA Patriot Act. Each customer must have its own qualified counsel determine the advisability of a particular solution as it relates to regulatory and statutory compliance.

Not responsible for typographical errors. Certain images are simulated.  
© 2024 Canon U.S.A., Inc. All rights reserved.  
08/24-1076-11287

1076-11287 8.19.24